

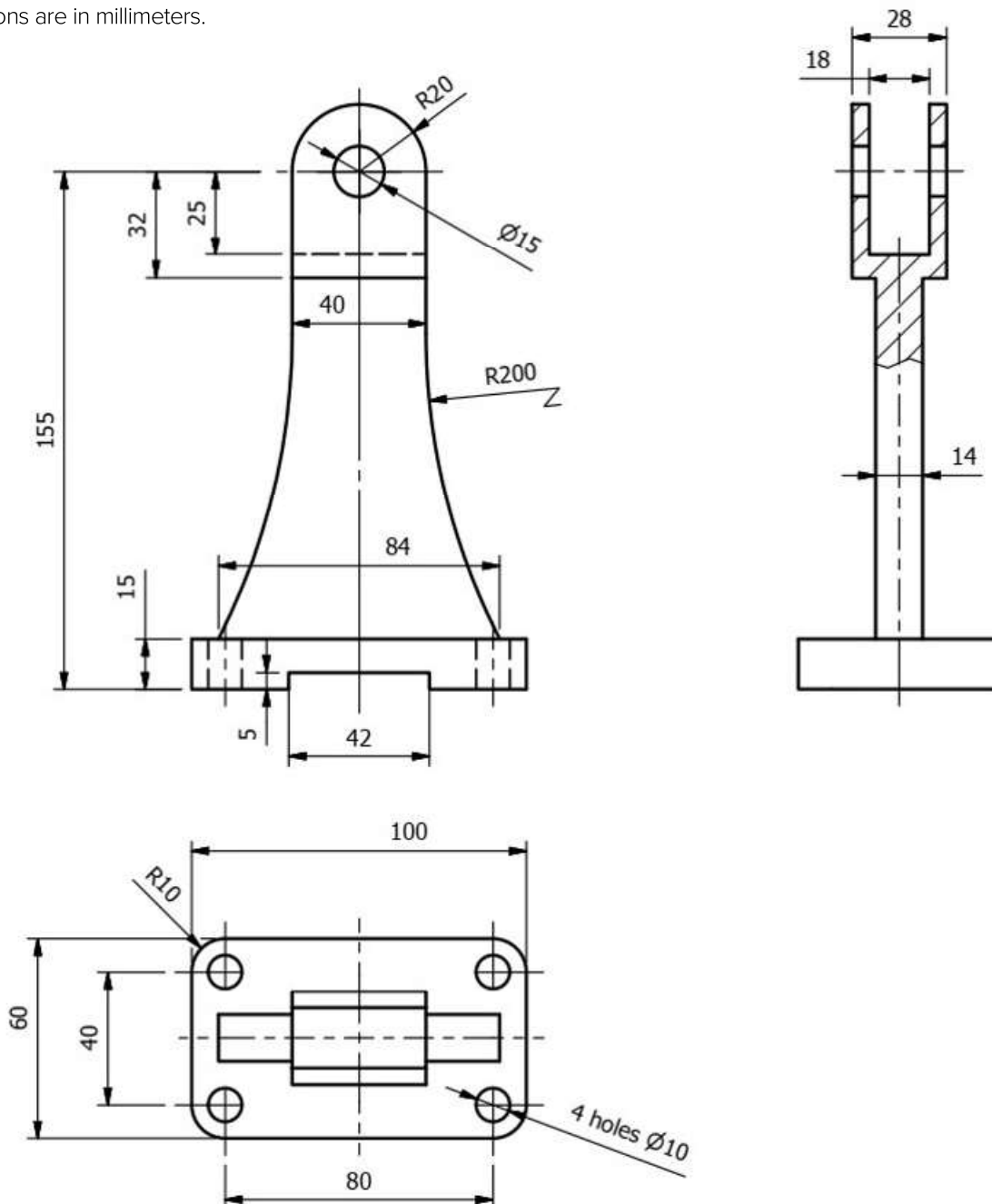
COMPUTER-AIDED DESIGN (CAD), ENGINEERING PRELIMINARY ROUND ON-SITE DESIGN PROBLEM

DESIGN PROBLEM

The design problem has three parts. Create a three (3)-dimensional representation of each of the following three items. Include dimensions and any necessary notes that you would like to include. The title block should only contain the problem number, student ID number, scale, and date.

PROBLEM #1

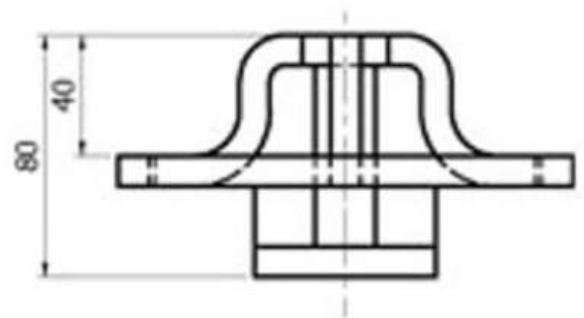
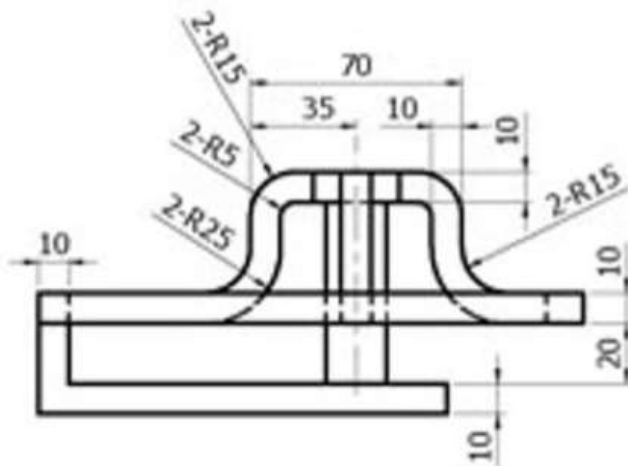
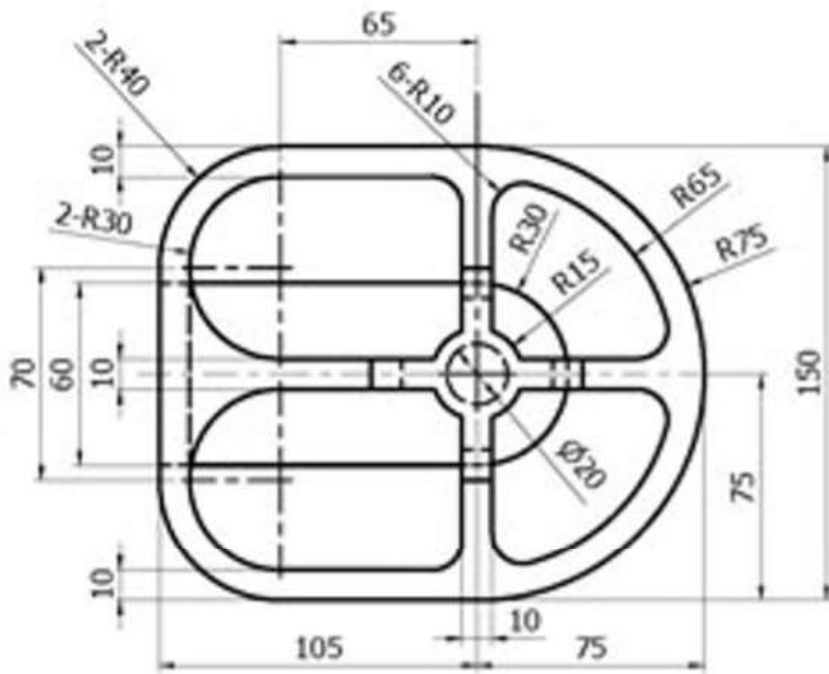
Dimensions are in millimeters.



COMPUTER-AIDED DESIGN (CAD), ENGINEERING
PRELIMINARY ROUND
ON-SITE DESIGN PROBLEM

PROBLEM #2

Dimensions are in millimeters.



COMPUTER-AIDED DESIGN (CAD), ENGINEERING
PRELIMINARY ROUND
ON-SITE DESIGN PROBLEM

PROBLEM #3

Dimensions are in millimeters.

